



**Branch**  
TECHNOLOGY

**sto**panel

# StoPanel® 3DP

Powered by Branch Technology

Facades



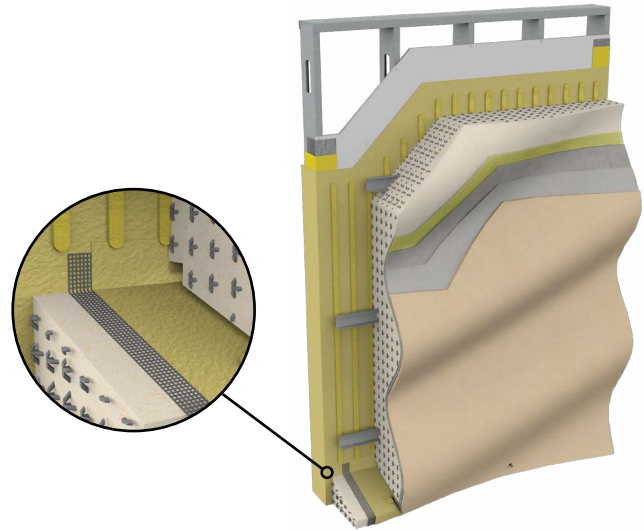
StoPanel® 3DP is a 3D printed system that includes all the control layers of a full building envelope. The unique Cellular Fabrication (C-Fab®) process is made possible through a partnership with Branch Technology with the Composite Core shapes being produced in Branch Technology's direct digital fabrication facility.



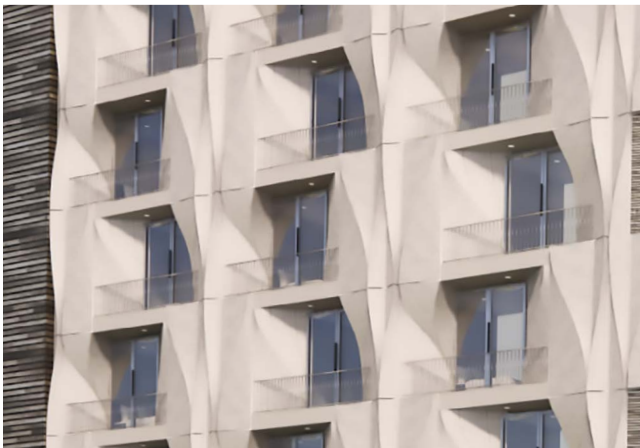
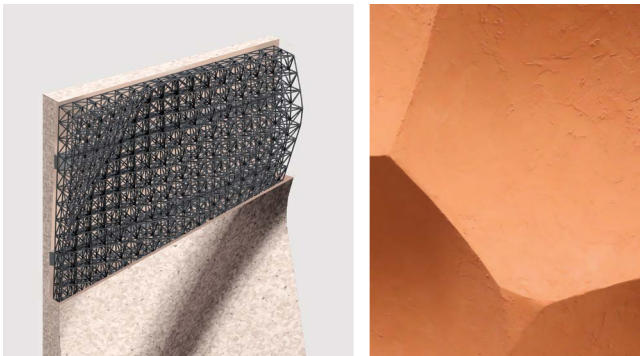
## Complete Control. Unprecedented Creativity.

To manufacture the StoPanel 3DP panels, a lightweight polymer matrix is robotically 3D printed, filled with a 2-lb density insulating foam, and robotically milled to exact dimensions

The process allows for unprecedented creativity as virtually any shape or form can be created at a large scale for use with any of Sto's high-performing finish and color options. Using Design Assist Services, you can fully explore the aesthetic possibilities. Because shapes are produced directly from digital files rather than being interpreted from shop drawings, the result is extreme accuracy that is true to the original design. The fully tested system with all control layers -- AMB, continuous insulation and watershedding, UV resistant finish -- performs to the highest standards and meets International Building Code standards. Further, the process is faster to complete and is inherently less wasteful than traditional construction methods, which means more rapid ROI for the owner.



StoPanel 3DP with Sto Wedge, a patented drainage wedge design



### Benefits

Design Freedom	Cost-effective and efficient process to achieve unique, fully customizable, 3D exterior shapes
Resource Stewardship	C-FAB® 3D printing and factory produced exterior wall panels dramatically reduce waste both on and off the construction site
Performance	Fully tested system with all control layers – AMB, continuous insulation and watershedding, UV resistant finish
Code Compliant	Meets International Building Code standards
Large format	Panels up to 10' x 25' dimensions for greater aesthetic flexibility and installation efficiency
Lightweight	Dramatically reduced structural and shipping requirements compared to GFRC and other concrete claddings
Design Assist Services	Branch Technology expertise helps maximize creative design possibilities

#### Sto Americas

**Sto Corp.**  
 3800 Camp Creek Pkwy  
 Building 1400, Suite 120  
 Atlanta, GA 30331  
 USA

Phone 1-800-221-2397  
[www.stocorp.com](http://www.stocorp.com)

#### Branch Technology

1530 Riverside Dr, Suite B  
 Chattanooga, TN 37406  
 USA

Phone 423-682-8800  
[www.branchtechnology.com](http://www.branchtechnology.com)

#### ATTENTION

Sto products are intended for use by qualified professional contractors, not consumers, as a component of a larger construction assembly as specified by a qualified design professional, general contractor or builder. They should be installed in accordance with those specifications and Sto's instructions. Sto Corp. disclaims all, and assumes no, liability for on-site inspections, for its products applied improperly, or by unqualified persons or entities, or as part of an improperly designed or constructed building, for the nonperformance of adjacent building components or assemblies, or for other construction activities beyond Sto's control. Improper use of Sto products or use as part of an improperly designed or constructed larger assembly or building may result in serious damage to this product, and to the structure of the building or its components. **STO CORP. DISCLAIMS ALL WARRANTIES EXPRESSED OR IMPLIED EXCEPT FOR EXPLICIT LIMITED WRITTEN WARRANTIES ISSUED TO AND ACCEPTED BY BUILDING OWNERS IN ACCORDANCE WITH STO'S WARRANTY PROGRAMS WHICH ARE SUBJECT TO CHANGE FROM TIME TO TIME.** For the fullest, most current information on proper application, clean-up, mixing and other specifications and warranties, cautions and disclaimers, please refer to the Sto Corp. website, [www.stocorp.com](http://www.stocorp.com).